

## Description



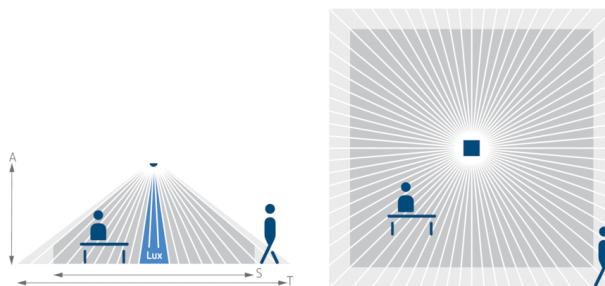
- Presence detector (PIR)
- For flush-mounting (concrete ceiling)
- With metal installation frame for screwed fixing in wooden ceilings or in flush-mounted sockets, incl. cover
- Square 360° detection area allows accurate and simple planning
- Flush design
- Mixed light measurement
- Presence and brightness-dependent control for lighting and HVAC systems
- Choice of fully or semi-automatic lighting control
- Connection option for sensors or switches for manual switching with automatic recognition
- Adjustable sensitivity
- Can be configured remotely
- Installation with mechanical stop
- Lighting control with brightness threshold value and self-learning switch-off delay
- Pulse function for staircase time switch
- Presence output with switch-on and switch-off delay
  - Room monitoring with selective movement detection
  - Management remote control SendoPro 868-A (optional)
  - SendoClic user remote control (optional)
- Parameters can be selected for subsequent changes
- Test operation mode checks the detection area and brightness threshold
- Individual covers available on request

## Technical data

Operating voltage KNX	Bus voltage, ca. 14 mA
Recommended installation height	2,5 – 3,5 m
Setting range brightness	5 – 2000 lx
Detection angle	360°
Type of connection	KNX bus terminal
Installation type	Ceiling installation (flush-mounting concrete)
Light switch-off delay	30 s–60 min
Lamps	energy saving lamps, fluorescent lamps, Incandescent/halogen lamps, LEDs
Light measurement	Mixed light measurement
Presence switch-off delay	10 s–120 min
Switch-on delay presence	10 s – 30 min
Ambient temperature	+0 °C ... +50 °C
Type of protection	IP 40

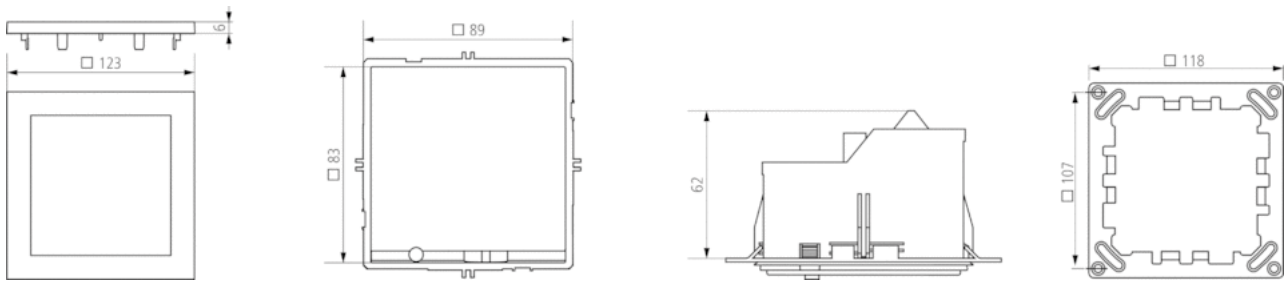
## Detection range

Mounting height (A)	Sitting (S)	Walking (T)
2 m	20 m <sup>2</sup>   4,5 m x 4,5 m	36 m <sup>2</sup>   6 m x 6 m ± 0,5 m
2,5 m	36 m <sup>2</sup>   6 m x 6 m	64 m <sup>2</sup>   8 m x 8 m ± 0,5 m
3 m	49 m <sup>2</sup>   7 m x 7 m	81 m <sup>2</sup>   9 m x 9 m ± 1 m
3,5 m	64 m <sup>2</sup>   8 m x 8 m	100 m <sup>2</sup>   10 m x 10 m ± 1 m



Article number: 2059202

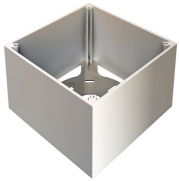
## Scale drawings



## Accessories

### PlanoBox 1WH

- Article number: 9070731  
Details ▶ [www.theben.de](http://www.theben.de)



### SendoPro 868-A

- Article number: 9070675  
Details ▶ [www.theben.de](http://www.theben.de)



### SendoClic

- Article number: 9070690  
Details ▶ [www.theben.de](http://www.theben.de)



### Junction casing, 115x115x100 mm

- Article number: 9070689  
Details ▶ [www.theben.de](http://www.theben.de)



### QuickSafe

- Article number: 9070531  
Details ▶ [www.theben.de](http://www.theben.de)

